

Cosmetic Surgery for Old Buildings

Cladding specialist SPV Special Projects is a consortium of companies that specialise in the complete design and build renovation of large scale commercial buildings, such as hotel groups, schools, office blocks and shopping centres.

Appointed by Canadian Property group Realstar Group to remodel the Cardiff Holiday Inn at Cardiff City Centre Castle Street, Satellite Architects (a member company of SPV Special Projects) was given the remit to modernize the look of the tired facades of the building and to create a fresh presence in the city. The intention was to create an informal face to address the stadium and the Castle with a more formal solid identity to address the primary approaches to the site. The wrapped façade helps to unify the disparate faces of the building from the oblique approach to the site, while the surrounding leisure facilities of the stadium and Castle Park are addressed by playful multi-layered glass and stone cladding which fragments the existing utilitarian character of that building.

The Holiday Inn at Cardiff City Centre is the first building in the UK to use the Italian product Piz panels by Zecca. Stewart Dodd of Satellite Architects commented "Piz panels were a great solution to our cladding needs for this building. They offered a variety of finishes, good colour selection and were economically priced". The project was done by SPV Special Projects Ltd who specializes in design and build of both exterior and interior refurbishment needs including windows, screen doors, roofing, cladding, canopies, road carpet and landscaping, painting and decoration. They can take you through the design stage, create drawings including proposed visual projections of the finished project, handle all building regulations and planning details, implement the designs and offer after sales maintenance and service.

This particular project needed careful planning as the existing walls had steel channels and I Beams bolted to it in various thicknesses to retain the existing brickwork back to the structure. SPV Special Projects called upon specialists Simco External Framing Solutions to provide an external frame that was levelled by using adjustable brackets and bars.

Due to the depth of the frame from the building All 4 One Engineering and Marshall Brown Windows devised a unique system for the flashings and cappings to fit into the Aluminium windows thus ensuring a watertight finish.

SPV Special Projects then fixed the panels to the frame to form an exclusive watertight and aesthetically pleasing building. Piz technical department engineered the panels to go horizontal with different textures to the face of the panels to bestow the Holiday Inn Cardiff with a look that appears to change with differing light levels and rain.

However, the design called for the panels to be placed vertically as well as horizontally. This had never been attempted before. With some reservations the technical team from Piz came to the Holiday Inn Cardiff to meet with Stewart Dodd of Satellite Architects and Howard Evans of SPV Special Projects to see both the design and the building in perspective. With much discussion and excitement they devised a panel which would achieve the desired effect

This was as exciting for Piz as everyone else and is a World first for all concerned.

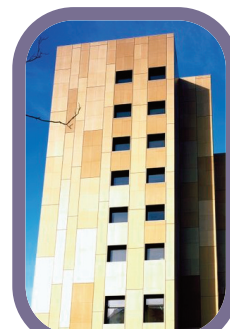
Howard Evans of SPV Special Projects noted "dramatic effect can be achieved through the re-cladding of buildings. It is a cost effective solution to modernizing out-dated buildings".

Of primary concern to the Hotel itself was the potential for lost revenue during the refurbishment programme. In order to minimise these losses it was vital that the Hotel management were made an integral part of the regeneration team. To achieve this the Hotel Manager was invited to all site meetings and his views on planned schedules obtained and taken into consideration. To maximise planning and delivery both ends of the Hotel where scaffolded. Therefore, if the Hotel had meeting rooms booked in one side the work could be progressed on the other. By using this collaborative approach the Hotel lost only one nights accommodation throughout the project, whilst all function rooms remained fully operational throughout.

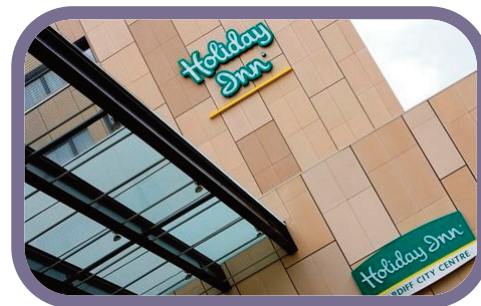
SPV Special Projects was founded in 2008 when a group of like minded companies joined forces to create a specialist technical and design service for



BEFORE



AFTER



working with "faces". All component companies are well established and have an excellent track record within their respective fields. While the main contractor is SPV Group, other partners, including those mentioned above include St Germain Webber, Ash and Lacy and Marshall Brown Windows among others. Driven by a desire to go back to "old fashioned values" – by way of championing the importance of communication and collaborative working – the team draw on their individual areas of expertise to address specific project requirements.

**Contact Mr Howard Evans
Managing Director
on Tel: 01922 457974
Mobile: 07967670833
e-mail: info@spvspecialprojects.com**

**WE ARE AT
INTERBUILD 08**

**Hall 5 Stand G115,
Please come and Join Us**



INTERBUILD

2008

OCTOBER 26TH-30TH NEC BIRMINGHAM